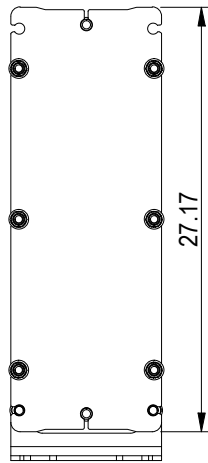
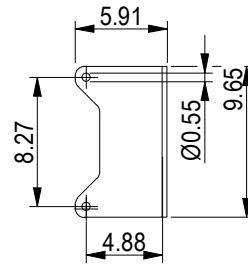
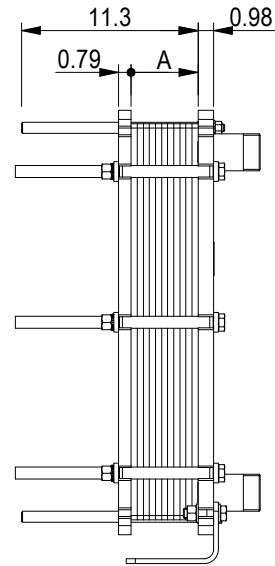


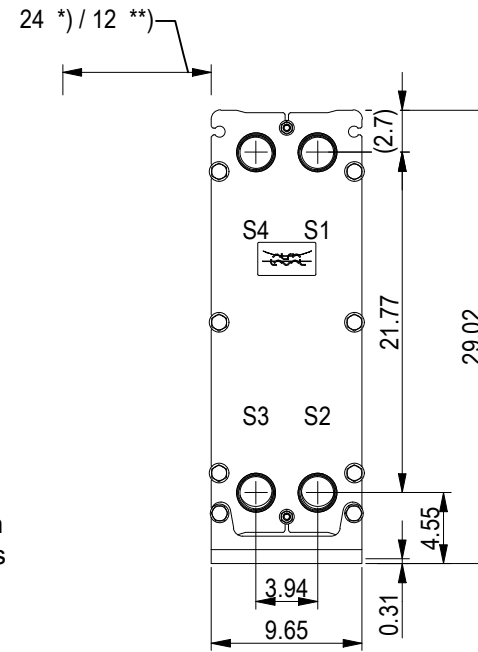
**PRESSURE PLATE**  
(MOVABLE)



Space between pressure plate and supporting column should be kept free from fixed installations!



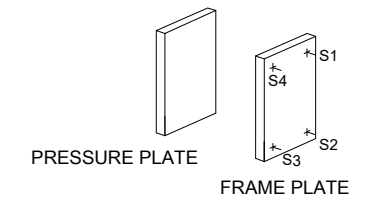
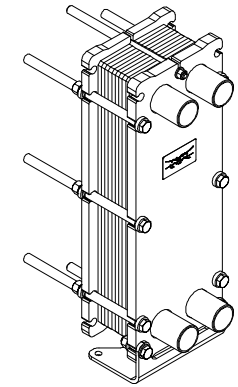
**FRAME PLATE**



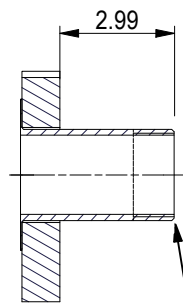
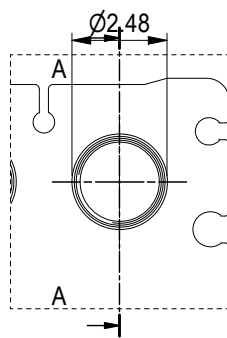
\*) Recommended free space for opening and closing to be applied on both sides

\*\* Free space can be reduced to this distance on one of the sides

All dimensions in inches



ASME B1.20.1 - 2-11.5 NPT, ALLOY 316L, 101 mm  
S1, S2, S3, S4 A-A:



ASME B1.20.1 - 2-11.5 NPT

NO. OF UNITS

1

null GPM  
null GPM

<b>APPROX. OUTER DIMENSIONS</b>	
LENGTH	11.8 in
WIDTH	10.2 in
HEIGHT	27.6 in
<b>APPROX. WEIGHTS</b>	
NET WEIGHT, EMPTY	183 lb
WEIGHT FULL OF WATER	206 lb
PLATE MATERIAL	ALLOY 316
PLATE THICKNESS	0.5 mm
GASKET	NBRP Clip-on

CHANNEL ARRANGEMENT 1\*19 ML / 1\*20 MH



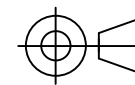
www.alfalaval.com

DRAWING  
GASKETED PLATE HEAT EXCHANGER

**T5-MFG**

ASME  
Code Section VIII Div.1

MAWP 145 psi at 150.1 °F  
MDMT 32.0 °F at 145 psi  
Designed and constructed in accordance with the 2019 ASME Code.



8240171450  
T5-MFG, 40 plates

Do not use this drawing for foundation bolting or piping layout

DATE 6/1/22  
REVISION 0